



# *PARTITURAS*

*Sophia - Mantente viva*

# MARIONETA

Sophia - Mantente Viva

Francesca Patiño  
Arr.: GG

♩=83

## INTRO

C#m7 F#m7 A7 G#7alt. C#m7 F#m7 A7 G#7alt.

## A Estrofa 1

5 C#m7 F#m7 A7 G#7alt. C#m7 F#m7 A7 G#7alt.

9 C#m7 F#m7 A7 G#7alt. C#m7 Bm7 F#(add9)/A# Amaj7 Dmaj7 G#7alt.

## B Estrofa 2

14 C#m7 F#m7 A7 G#7alt. C#m7 F#m7 A7 G#7alt.

18 C#m7 F#m7 A7 G#7alt. C#m7 Bm7 F#(add9)/A# Amaj7 Dbmaj7

## C Estribillo

22 Gm7 Gm7/F Ebm7 Bmaj7 Gbmaj7 Dbmaj7

26 Gm7 Gm7/F Ebm7 Bmaj7 Gbmaj7 Dbmaj7 Am7(4t) G#7alt.

## D (Intro) - instrumental

31 C#m7 F#m7 A7 G#7alt. C#m7 F#m7 A7 G#7alt.

## E Estrofa 3

35 C#m7 A7 G#7alt. C#m7 F#m7 A7 G#7alt. Em7 C/D

39 C#m7 F#m7 A7 G#7alt. C#m7 Bm7 F#(add9)/A# Amaj7 Dbmaj7

2 **F** *Estribillo*

43 **Gm<sup>7</sup>** **Gm<sup>7</sup>/F** **Ebm<sup>7</sup>** **Bmaj<sup>7</sup>** **Gbmaj<sup>7</sup>** **Dbmaj<sup>7</sup>**



47 **Gm<sup>7</sup>** **Gm<sup>7</sup>/F** **Ebm<sup>7</sup>** **Bmaj<sup>7</sup>** **Gbmaj<sup>7</sup>** **Dbmaj<sup>7</sup>** **Am7(4t)** **G#7alt.** **∕**



**G** *Coda*

53 **Gbmaj<sup>7</sup>** **A/B** **Gbmaj<sup>7</sup>** **A/B**



57 **Gbmaj<sup>7</sup>** **A/B** **Gbmaj<sup>7</sup>** **A/B** **1.**



**H** **2.**

61 **A/B** **Gbmaj<sup>7</sup>**



solo rhodes

# COMO DUELE

Sophia - Mantente Viva

Francesca Patiño/Gilmarí Gerena

Arr.: GG

♩=100

**A** Estrofa 1 y 2 - 1. solo voz, cuerdas y batería  
2. entra bajo

Dm<sup>7</sup> Em<sup>7</sup> Am<sup>7</sup> Dm<sup>7</sup> Em<sup>7</sup> Am<sup>7</sup>

Musical staff for measures 1-4, showing a treble clef, 4/4 time signature, and a melodic line with eighth notes and rests.

5 Dm<sup>7</sup> Em<sup>7</sup> Am<sup>7</sup> Dm<sup>7</sup> Em<sup>7</sup> Am<sup>7</sup>

Musical staff for measures 5-8, continuing the melodic line from the previous staff.

**B** Puente - entra rhodes

9 Dm<sup>6</sup> Dm<sup>7</sup> Dm(maj7) /

Musical staff for measures 9-12, featuring a Rhodes piano accompaniment indicated by diagonal slashes.

**C** Estribillo

13 Em<sup>7</sup> Em(maj7) Bm<sup>7</sup> Am<sup>7</sup> Am(maj7) Bm<sup>7</sup>

Musical staff for measures 13-16, featuring a Rhodes piano accompaniment indicated by diagonal slashes.

17 Em<sup>7</sup> Em(maj7) Bm<sup>7</sup> Am<sup>7</sup> Am(maj7) Bm<sup>7</sup> C#m<sup>7</sup> de Sa

Musical staff for measures 17-20, featuring a Rhodes piano accompaniment indicated by diagonal slashes.

**D** Estribillo/puente 2 - solo voz, cuerdas y bateria - (bajo en la repetición)

Em<sup>7</sup> / Am<sup>7</sup> /

Musical staff for measures 21-24, featuring a Rhodes piano accompaniment indicated by diagonal slashes.

**E** puente 3

Em<sup>7</sup> / Am<sup>7</sup> /

Musical staff for measures 25-28, featuring a Rhodes piano accompaniment indicated by diagonal slashes.

**F** puente 4

Em<sup>7</sup> / Am<sup>7</sup> 1. / 2. Am<sup>7</sup> E<sup>7</sup>alt.

Musical staff for measures 29-32, featuring a Rhodes piano accompaniment indicated by diagonal slashes.

**G** Estribillo

F#m<sup>7</sup> F#m(maj7) C#m<sup>7</sup> Bm<sup>7</sup> Bm(maj7) C#m<sup>7</sup>

Musical staff for measures 33-36, featuring a Rhodes piano accompaniment indicated by diagonal slashes.

F#m<sup>7</sup> F#m(maj7) C#m<sup>7</sup> Bm<sup>7</sup> 1. Bm(maj7) E<sup>7</sup>alt. 2. Bm(maj7) E<sup>7</sup>alt.

Musical staff for measures 37-40, featuring a Rhodes piano accompaniment indicated by diagonal slashes.

# HAY JUSTICIA

Sophia - Mantente Viva

Francesca Patiño

Arr.: GG

♩=150

**A** *estrofa*  
Emaj7

Am7

Emaj7

Am7

5 Emaj7

Am7

Gmaj7

Fmaj7

9 **B** *puente 1*  
Cmaj7

B7

Em7

F#m7 E/G#

13 Cmaj7

B7

Em7

F#m7

E/G#

Am7

17 *∕*

Fmaj7

A/B

Emaj7

20 **C** *estribillo*  
Emaj7

Bb7

Amaj7

B/C#

Dmaj9

A/B

26 Emaj7

Bb7

Amaj7

B/C#

Dmaj9

A/B



**D** *solo piano*

32 Emaj7

Am7

Emaj7

Am7

Emaj7

Am7

de **S**a

**F** *puente 2*

Am7

Bm7

Cmaj7

*∕*

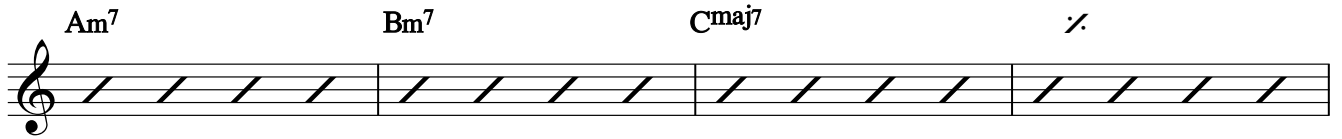
Am7

B7

Em7

*∕*

Am<sup>7</sup> Bm<sup>7</sup> Cmaj<sup>7</sup> /



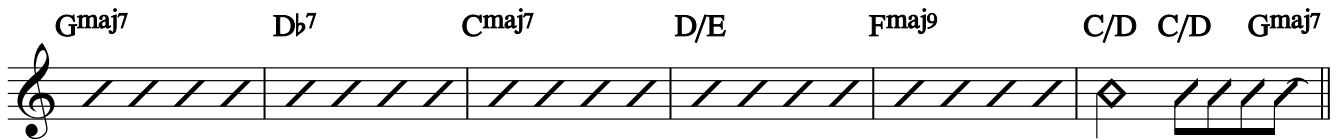
Am<sup>7</sup> Bm<sup>7</sup> Cmaj<sup>7</sup> C/D Ebmaj<sup>7</sup> Eb/F / C/D Gmaj<sup>7</sup>



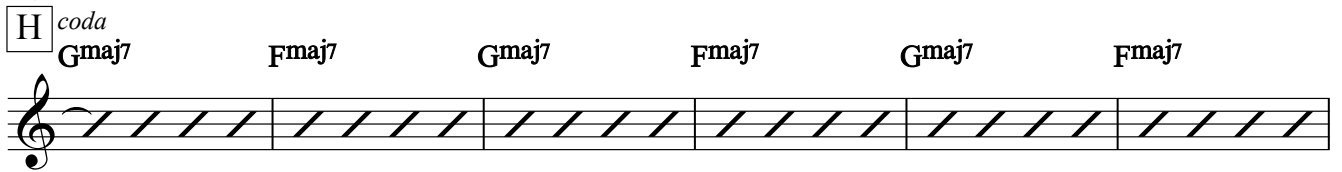
**G** *estribillo*  
Gmaj<sup>7</sup> Db<sup>7</sup> Cmaj<sup>7</sup> D/E Fmaj<sup>9</sup> C/D



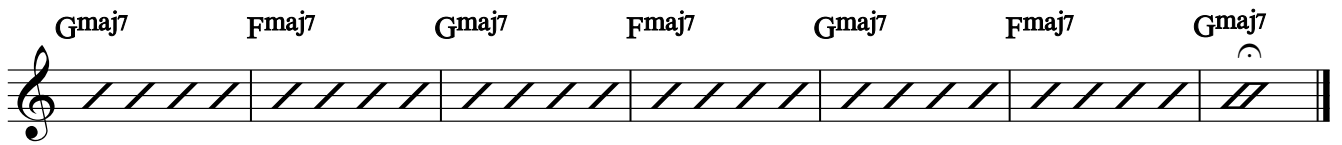
Gmaj<sup>7</sup> Db<sup>7</sup> Cmaj<sup>7</sup> D/E Fmaj<sup>9</sup> C/D C/D Gmaj<sup>7</sup>



**H** *coda*  
Gmaj<sup>7</sup> Fmaj<sup>7</sup> Gmaj<sup>7</sup> Fmaj<sup>7</sup> Gmaj<sup>7</sup> Fmaj<sup>7</sup>



Gmaj<sup>7</sup> Fmaj<sup>7</sup> Gmaj<sup>7</sup> Fmaj<sup>7</sup> Gmaj<sup>7</sup> Fmaj<sup>7</sup> Gmaj<sup>7</sup>



# SUEÑA CONMIGO

Sophia - Mantente Viva

Francesca Patiño

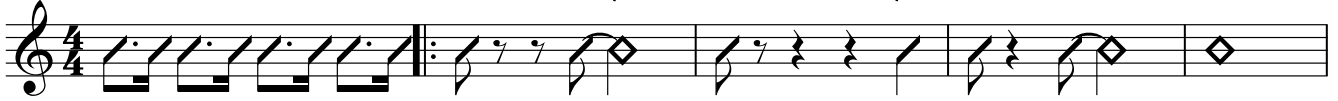
Arr.: GG

♩=102

INTRO solo drum

♩ A Estrofa AA

Bbm7 Ab6/C Dbmaj7 Fm/Eb Gbmaj7 B13

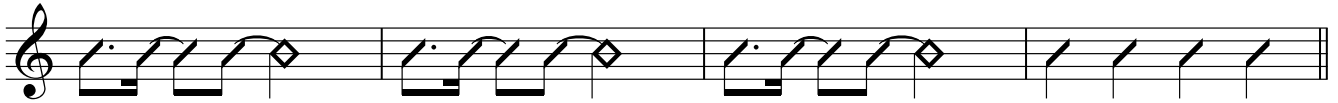


6 Bbm7 Ab6/C Dbmaj7 Fm/Ab Gbmaj7 F7alt.



B Puente 1 B

10 Ebm7 F7(b13) Gbmaj7 Cm7 F7alt.



C Estrofa A

14 Bbm7 Ab6/C Dbmaj7 Fm/Ab Gbmaj7 F7alt. Bbm7 F7alt.



D Estribillo

19 Bbm7 Ab6/C Dbmaj7 Gbmaj7 B13



23 Bbm7 Ab6/C Dbmaj7 Fm/Eb Gbmaj7 F7alt. /:



E Interludio instrumental

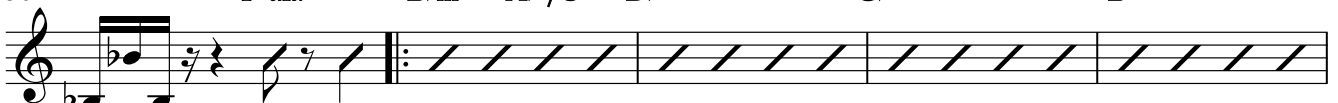
28 Bbm7 Ab6/C Dbmaj7 Fm/Eb Gbmaj7 B13



32 Bbm7 Ab6/C Dbmaj7 Fm/Ab Gbmaj7 F7alt. de S a



36 F7alt. F Estribillo Bbm7 Ab6/C Dbmaj7 Gbmaj7 B13



41 Bbm7 Ab6/C Dbmaj7 Fm/Eb Gbmaj7 1. F7alt.



2

45 2. G *Puente 2*  
 F7alt. E7(#11) Eb13 // // C7 B7

50 Eb13 // // F7alt. G13 G#13 A13

H *Coda*  
 54 Bbm7 Ab6/C Dbmaj7 Gbmaj7 B13

58 Bbm7 Ab6/C Dbmaj7 Fm/Eb Gbmaj7 F7alt. Bm7



# SIN LATIDO

Francesca Patiño

Arr.: GG

## INTRO

Gm<sup>7</sup> E<sup>b</sup>maj<sup>7</sup> Gm<sup>7</sup> E<sup>b</sup>maj<sup>7</sup>

5 **A** Gm<sup>7</sup> E<sup>b</sup>maj<sup>7</sup> Gm<sup>7</sup> E<sup>b</sup>maj<sup>7</sup>

9 **B** F Fm<sup>7</sup> E<sup>b</sup>maj<sup>7</sup> D(sus4) D

13 **C** Gm<sup>7</sup> F E<sup>b</sup>maj<sup>7</sup> D(sus4) D Gm<sup>7</sup> F E<sup>b</sup>maj<sup>7</sup> D(sus4) D

17 Gm<sup>7</sup> F E<sup>b</sup>maj<sup>7</sup> D(sus4) D  $\emptyset$  E<sup>b</sup>maj<sup>7</sup> D(sus4) D

21 **D** *interludio instrumental* Gm<sup>7</sup> E<sup>b</sup>maj<sup>7</sup> Gm<sup>7</sup> E<sup>b</sup>maj<sup>7</sup> de  $\emptyset$  a  $\emptyset$

**E**  $\emptyset$  Gm<sup>7</sup> F E<sup>b</sup>maj<sup>7</sup> D(sus4) D

**F** Cm<sup>7</sup> D D/F# Gm Gm<sup>7</sup>/F E<sup>b</sup>maj<sup>7</sup> /D

Cm<sup>7</sup> /B<sup>b</sup> D/A D D/F# Gm<sup>7</sup> F/A B<sup>b</sup>maj<sup>7</sup> C/E E<sup>b</sup>maj<sup>7</sup> D(sus4) D

**G** Gm<sup>7</sup> F E<sup>b</sup>maj<sup>7</sup> D(sus4) D Gm<sup>7</sup> F E<sup>b</sup>maj<sup>7</sup> D(sus4) D

Gm<sup>7</sup> F E<sup>b</sup>maj<sup>7</sup> D(sus4) D Gm<sup>7</sup> F E<sup>b</sup>maj<sup>7</sup> D(sus4)  $\hat{D}$

**H** Gm<sup>7</sup>  $\hat{E}^b$ maj<sup>7</sup>

# SOPHIA

Sophia - Mantente Viva

Francesca Patiño

Arr.: GG

♩=90



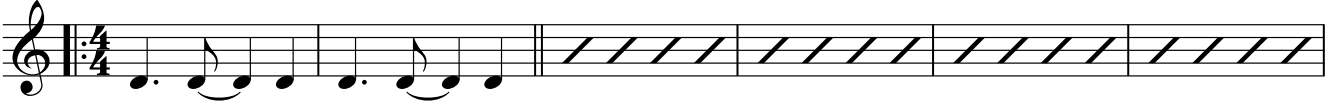
**A** *Intro*

Gm<sup>7</sup>

Dm<sup>7</sup>

Gm<sup>7</sup>/B<sup>b</sup>

A<sup>7</sup>(sus4)



7 Gm<sup>7</sup>

Dm<sup>7</sup>

F<sup>6</sup>

E<sup>b</sup>maj<sup>7</sup>



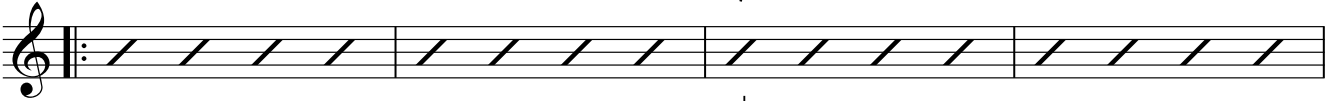
**A** *Estrofa A-B*

11 Gm<sup>7</sup>

Dm<sup>7</sup>

Gm<sup>7</sup>/B<sup>b</sup>

A<sup>7</sup>(sus4)



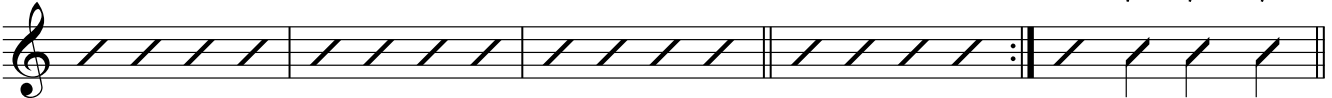
15 Gm<sup>7</sup>

Dm<sup>7</sup>

F<sup>6</sup>

E<sup>b</sup>maj<sup>7</sup>

E<sup>b</sup>maj<sup>7</sup> F/G G/A A<sup>b</sup>/B<sup>b</sup>



**B** *Estribillo*

20 E<sup>b</sup>maj<sup>7</sup>

B<sup>b</sup>maj<sup>7</sup>

F

Gm<sup>7</sup> F/A B<sup>b</sup> F/C



24 E<sup>b</sup>maj<sup>7</sup>

B<sup>b</sup>maj<sup>7</sup>

F

Gm<sup>7</sup>

de a



**C** *Estribillo*

E<sup>b</sup>maj<sup>7</sup> F/G G/A A<sup>b</sup>/B<sup>b</sup>

E<sup>b</sup>maj<sup>7</sup>

B<sup>b</sup>maj<sup>7</sup>

F

Gm<sup>7</sup> F/A B<sup>b</sup> F/C



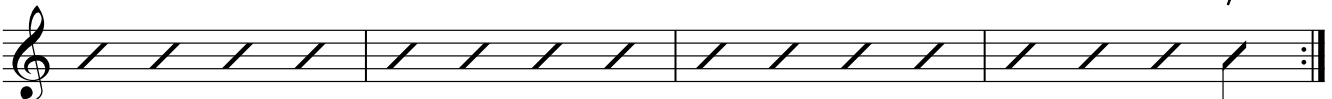
E<sup>b</sup>maj<sup>7</sup>

B<sup>b</sup>maj<sup>7</sup>

F

Gm<sup>7</sup>

D/E



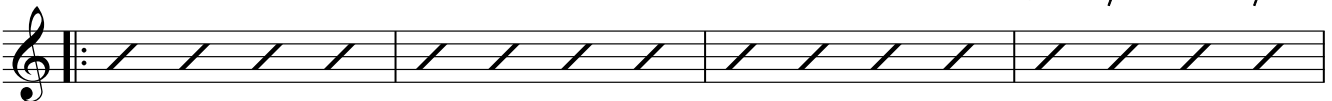
**D** *Coda*

E<sup>b</sup>maj<sup>7</sup>

B<sup>b</sup>maj<sup>7</sup>

F

Gm<sup>7</sup> F/A B<sup>b</sup> F/C



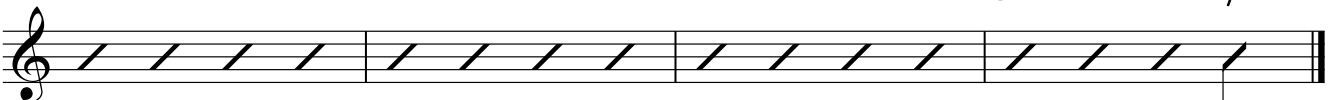
E<sup>b</sup>maj<sup>7</sup>

B<sup>b</sup>maj<sup>7</sup>

F

Gm<sup>7</sup>

D/E



# VUELVO A LA VIDA

Sophia - Mantente Viva

Francesca Patiño

Arr.: GG

♩=152

## INTRO

C#m7 F#13 Amaj7 G#m7 G#7

5 C#m7 F#13 A/B /

## A Estrofa 1

9 Emaj7 G#m7 Amaj7 F#m7 Dmaj7

13 Emaj7 G#m7 Amaj7 Dmaj7

## B Puente 1

17 Amaj7 C#m7 Emaj7 F#m7

21 Amaj7 C#m7 Dmaj7 / F#m7 A/B

## C Estribillo 1

26 C#m7 F#13 Amaj7 G#m7 G#7

30 C#m7 F#13 Amaj7 1. G#m7 G#7 2. G#7alt.

## D Solo de guitarra

C#m7 F#13 Amaj7 G#m7 G#7

C#m7 F#13 1. Amaj7 G#m7 G#7 2. A/B /

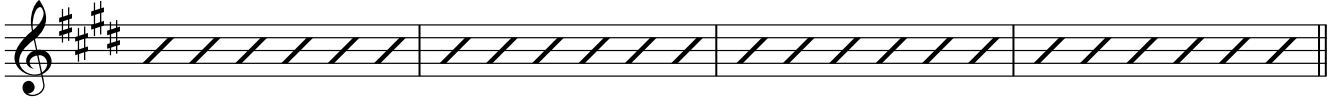
2

E *Estrofa 2*

Emaj7 Emaj7/F# G#m7 Amaj7 F#m7 Dmaj7



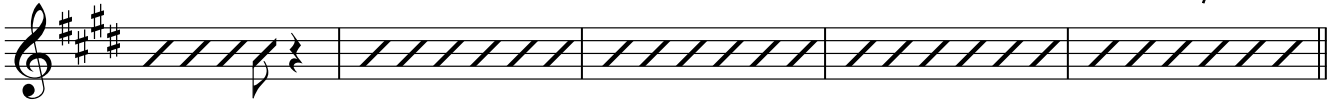
Emaj7 G#m7 Amaj7 Dmaj7

F *Puente 2*

Amaj7 C#m7 Emaj7 F#m7



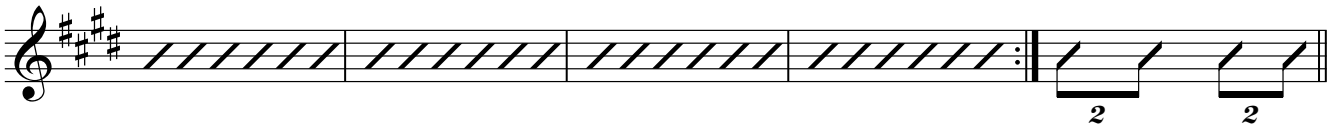
Amaj7 C#m7 Dmaj7 /: F#m7 A/B

G *Estrillo 2 y 3*

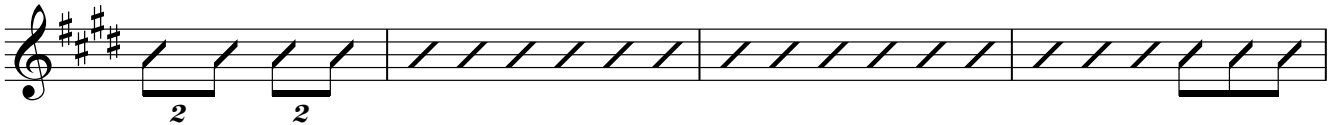
C#m7 F#13 Amaj7 G#m7 G7



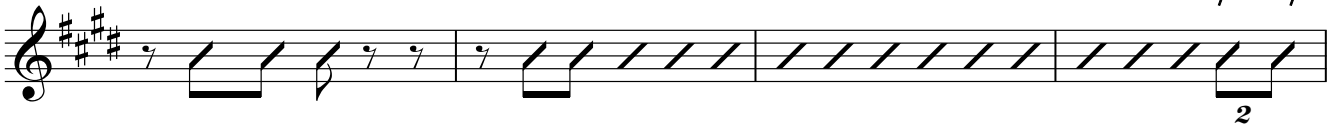
C#m7 F#13 Amaj7 1. G#m7 G7 2. G#7alt. A#m7 Bm7 Cm7



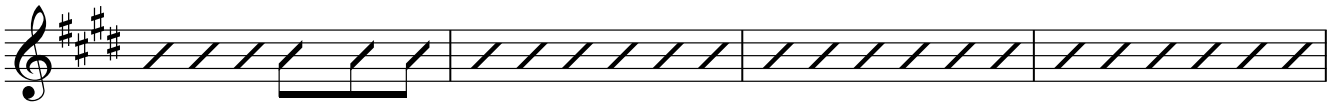
C#m7 D#m7 E7 F7 F#13 Amaj7 G#m7 G7 G7 F#7



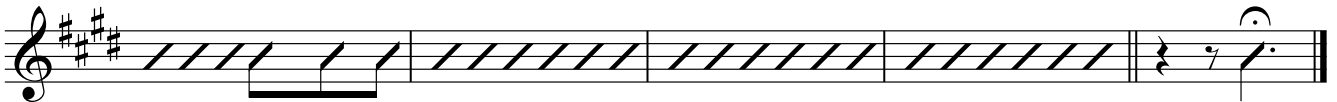
C#m7 D#m7 E7 E7 F7 F#13 Amaj7 G#7alt. C/D D/C



C#m7 C#m7 D#m7 E7 F#13 Amaj7 G#m7 G7



C#m7 C#m7 Cm7 Bm7 Bb7alt. Amaj7 G#7alt. C#m7



# SEREMOS SUS MANOS

Sophia - Mantente Viva

Gilmarí Gerena

Arr.: GG

♩=105

INTRO drum solo

A Estrofa

Cm<sup>7</sup>

D<sup>b</sup>maj<sup>7</sup>

G<sup>b</sup>maj<sup>7</sup>

Fm<sup>7</sup>



7 Cm<sup>7</sup>

D<sup>b</sup>maj<sup>7</sup>

G<sup>b</sup>maj<sup>7</sup>

Fm<sup>7</sup>



B Puente

11 Cm<sup>7</sup>

D<sup>b</sup>maj<sup>7</sup>

Cm<sup>7</sup>

D<sup>b</sup>maj<sup>7</sup>



C Estribillo

15 Cm<sup>7</sup>

Gm<sup>7</sup>

Fm<sup>7</sup>

G<sup>7</sup>alt.

Cm<sup>7</sup>

Gm<sup>7</sup>

Fm<sup>7</sup>

G<sup>7</sup>alt.



19 Cm<sup>7</sup>

Gm<sup>7</sup>

Fm<sup>7</sup>

G<sup>7</sup>alt.

A<sup>b</sup>maj<sup>7</sup>

G<sup>7</sup>alt.



D Puente instrumental

23 Cm<sup>7</sup>

D<sup>b</sup>maj<sup>7</sup>

Cm<sup>7</sup>

D<sup>b</sup>maj<sup>7</sup>



27 Cm<sup>7</sup>

D<sup>b</sup>maj<sup>7</sup>

Cm<sup>7</sup>

D<sup>b</sup>maj<sup>7</sup>



E Estrofa

31 Cm<sup>7</sup>

D<sup>b</sup>maj<sup>7</sup>

G<sup>b</sup>maj<sup>7</sup>

Fm<sup>7</sup>



35 Cm<sup>7</sup>

D<sup>b</sup>maj<sup>7</sup>

G<sup>b</sup>maj<sup>7</sup>

Fm<sup>7</sup>



F Puente 2 - 1<sup>o</sup> solo drum y voces  
2<sup>o</sup> entran todos menos piano

39 Cm<sup>7</sup>

∴

∴

∴



2

**G** *Estribillo*

43 Cm<sup>7</sup> Gm<sup>7</sup> Fm<sup>7</sup> G<sup>7</sup>alt. Cm<sup>7</sup> Gm<sup>7</sup> Fm<sup>7</sup> G<sup>7</sup>alt.

47 Cm<sup>7</sup> Gm<sup>7</sup> Fm<sup>7</sup> G<sup>7</sup>alt. A<sup>b</sup>maj<sup>7</sup> 1. G<sup>7</sup>alt.

**H** *Coda*

51 2. G<sup>7</sup>alt. Cm<sup>7</sup> D<sup>b</sup>maj<sup>7</sup> Cm<sup>7</sup> D<sup>b</sup>maj<sup>7</sup>

56 Cm<sup>7</sup> D<sup>b</sup>maj<sup>7</sup> Cm<sup>7</sup> D<sup>b</sup>maj<sup>7</sup>/A<sup>b</sup>

# YOUR NAME

Sophia - Mantente Viva

Gilmari Gerena

Arr.: GG

♩=70

**A** Estribillo - solo voz, piano y guitarra

Cm<sup>7</sup> E<sup>b</sup>maj<sup>7</sup> B<sup>b</sup> F

**B** Estrofa - solo rhodes y bombo a negras

6 Cm<sup>7</sup> A<sup>b</sup>maj<sup>7</sup> B Cm<sup>7</sup>

**C** solo rhodes y bombo a negras (en la repetición con guitarra)

10 Cm<sup>7</sup> A<sup>b</sup>maj<sup>7</sup> B Cm<sup>7</sup>

**D** patrón rítmico y entra bajo

14 Cm<sup>7</sup> A<sup>b</sup>maj<sup>7</sup> B Cm<sup>7</sup>

**E** Puente - entra piano

18 E<sup>b</sup>maj<sup>7</sup> Fm<sup>7</sup> Gm<sup>7</sup> A<sup>b</sup>maj<sup>7</sup> F/G

**F** Estribillo

22 Cm<sup>7</sup> E<sup>b</sup>maj<sup>7</sup> B<sup>b</sup> F

26 Cm<sup>7</sup> E<sup>b</sup>maj<sup>7</sup> B<sup>b</sup> F

**G** Estribillo

31 Cm<sup>7</sup> E<sup>b</sup>maj<sup>7</sup> B<sup>b</sup> F

35 Cm<sup>7</sup> E<sup>b</sup>maj<sup>7</sup> B<sup>b</sup> F

**H** Coda - solo de guitarra

39 Cm<sup>7</sup> E<sup>b</sup>maj<sup>7</sup> B<sup>b</sup> F

43 Cm<sup>7</sup> E<sup>b</sup>maj<sup>7</sup> B<sup>b</sup> F F

# TODO LO TRANSFORMAS

Sophia - Mantente Viva

Francesca Patiño

Arr.: GG

♩=61

**A** Estrofa 1 - solo piano y voz

F#m7 C#m7 Bm7 F#m7 C#m7 Bm7

5 F#m7 C#m7 Bm7 Dmaj7 E(sus4) E

**B** Estrofa 2 - entra base

9 F#m7 C#m7 Bm7 F#m7 C#m7 Bm7

13 F#m7 C#m7 Bm7 Dmaj7 E(sus4) E

**C** Estribillo

17 Dmaj7 F#m7 Gmaj7 /

**D** Estrofa 3 - entran cuerdas

21 F#m7 C#m7 Bm7 F#m7 C#m7 Bm7

25 F#m7 C#m7 Bm7 Dmaj7 E(sus4) E

**E** Estribillo

29 Dmaj7 F#m7 Gmaj7 /

33 Dmaj7 F#m7 Gmaj7 /

**F** Puente - ritmo más marcado

37 Dmaj7 C#m7 Bm7 A Bm7 C#m7



41 **Dmaj7** **C#m7** **Fmaj7** **Gmaj7** **E(sus4)** **E**

45 **G** *Estrillo* **Dmaj7** **F#m7** **Gmaj7** **/:**

49 **Dmaj7** **F#m7** **Gmaj7** **A**ma**j7 B**m**7 C#**m**7 E**m**7**

53 **H** *Estrillo* **Dmaj7** **F#m7** **Gmaj7** **/:**

57 **I** *solo piano voz y platos* **Dmaj7** **F#m7** **G**ma**j7**